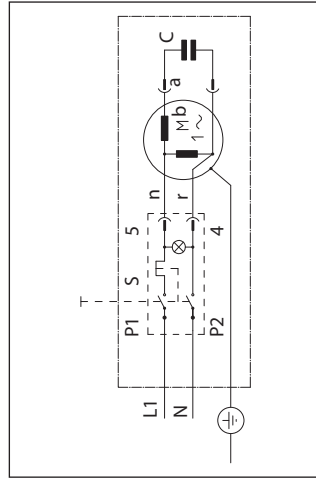




ANNOVI REVERBERI
The Power of Experience

ANNOVI REVERBERI S.p.A.
Via M. L. King, 3 - 41100 Modena (Italy)
Tel. (+39) 059.414.411 - Telefax (+39) 059.253.505
E - Mail: industria@annovireverberi.it

WIRING DIAGRAM / SCHEMA ELECTRIQUE / SCHALTPLAN ESQUEMA ELECTRICO / SCHEMA ELETTRICO



r = RED ROUGE ROT ROJO ROSSO
n = BLACK NOIR SCHWARTZ NEGRO NERO
b = WHITE BLANC WEISS BLANCO BIANCO
a = BLUE BLEU BLAU AZUL AZZURRO

Pump type
Type de pompe
Pumpetyp
Tipo de bomba
Tipo pompa

HPE-M



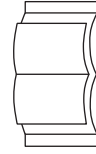
TECHNICAL DATA / DONNEES TECHNIQUES / TECHNISCHE ANGABEN CARACTERISTICAS TECNICAS / CARATTERISTICHE TECNICHE

PUMP TYPE TYPE DE POMPE PUMPETYP TIPO DE BOMBA TIPO POMPA	CAPACITY DEBIT LEISTUNG CAUDAL PORTATA		PRESSURE PRESSION DRUCK PRESION PRESSIONE		POWER PUISSANCE KRAFT POTENCIA POTENZA		RPM TOURS/1' U.P.M. REVOLUCIONES/1' N° GIRI/1'	1 ~ 50 Hz Volt
	l/min	gpm (US)	bar	psi	HP	kW		
HPE-M 02.08	2	0.52	80	1145	0.5	0,35	1450	230
HPE-M 04.08	4	1.06	80	1145	1	0,7	1450	230
HPE-M 06.08	6	1.58	80	1145	1	0,7	1450	230
HPE-M 08.08	8	2.11	80	1145	1,8	1,35	1450	230
HPE-M 11.07	11	2.90	70	1015	2,2	1,65	1450	230
HPE-M 13.06	13	3.43	60	870	2,2	1,65	1450	230



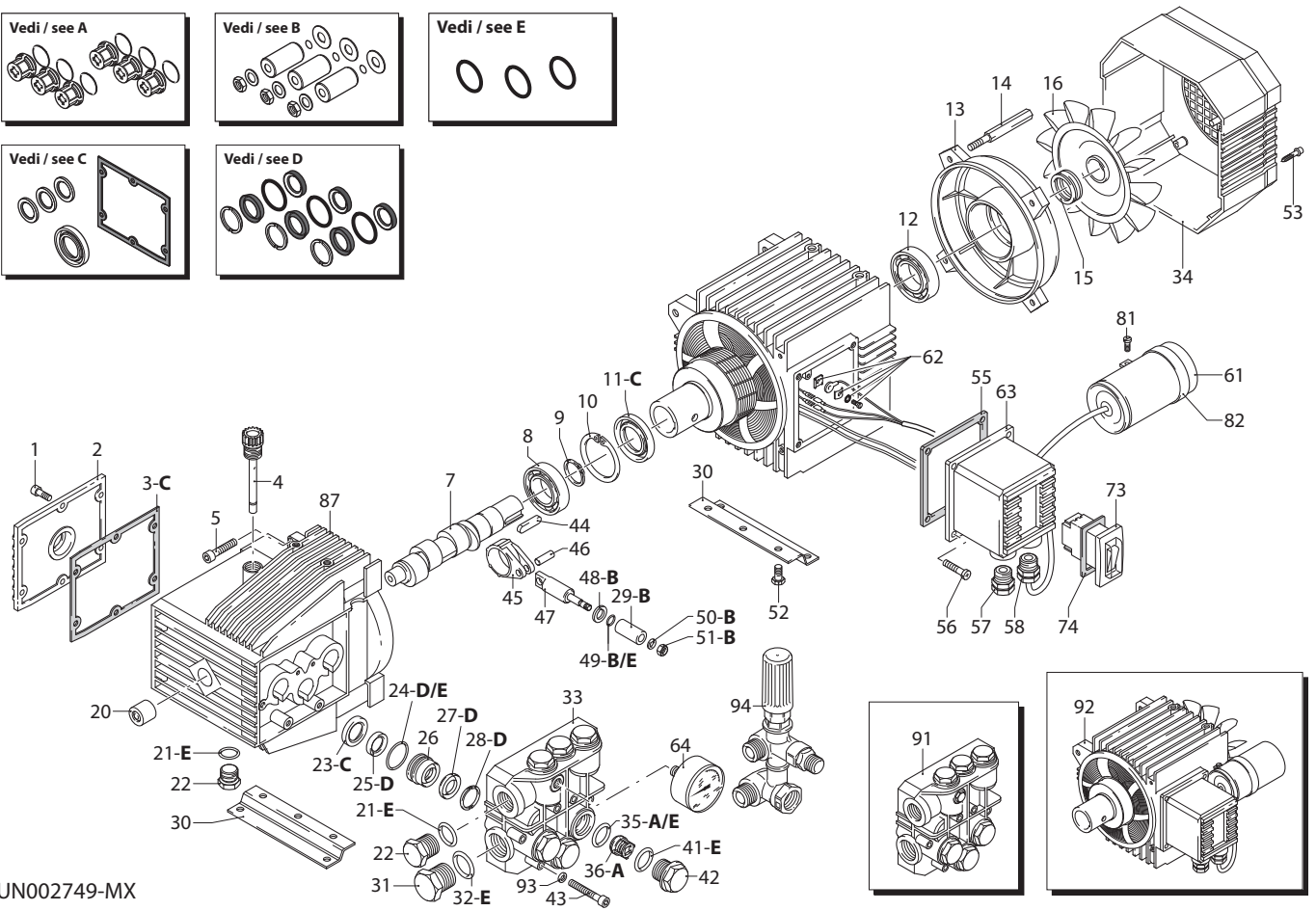
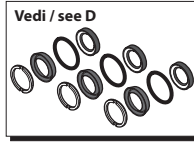
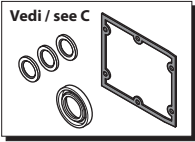
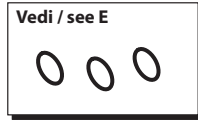
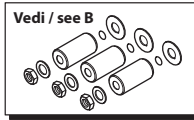
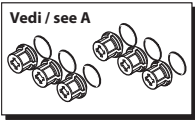
ATTENTION:
ATTENZIONE:
ACHTUNG:
ATENCIÓN:
ATTENZIONE:

- This manual must be read before beginning installation of the unit.
- Ce livret doit être lu avant d'installer et d'employer le produit.
- Das vorliegende Handbuch ist vor der Installation und dem Gebrauch des Produkts aufmerksam zu lesen.
- Este manual debe ser leído antes de proceder a la instalación y uso del producto.
- Il presente libretto va letto prima di procedere all'installazione ed uso del prodotto.



HPE-M

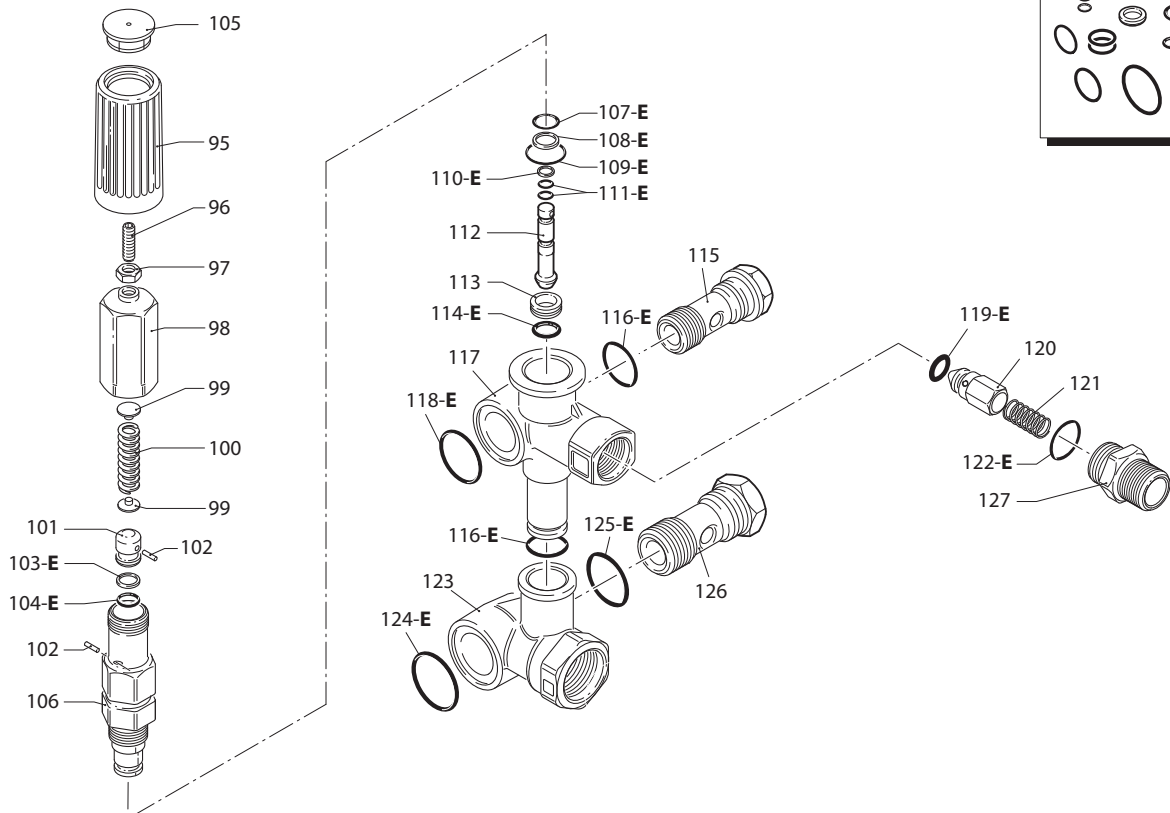
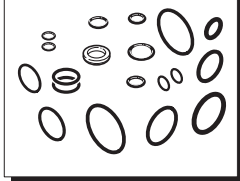
1450_{rpm}



UN002749-MX

KIT RICAMBI / PART KITS

E= 2812



UN002750-MX

HPE-M

MODELLO - MODEL:

02.08 04.08 06.08 08.08 11.07
13.06



Pos.	Cod. Part n°	Denominazione	Description	Q.tà Q.ty	Note Vedi / See	Pos.	Cod. Part n°	Denominazione	Description	Q.tà Q.ty	Note Vedi / See
1	1260760	Vite TCEI M 5x20	Screw	6		51	1260110	Dado	Nut	3	C=10 Nm
2	1269101	Coperchio completo	Complete cover	1		52	1260470	Vite TE M 8x10	Screw	4	
3	1260040	Guarnizione	Gasket	1		53	1261551	Vite autof.ab 3,9x13	Screw	4	
4	1260480	Tappo carico olio	Oil cap	1		54	1261720	Morsettiera	6 stud terminal block	1	
5	1260780	Vite TCEI M 5x25	Screw	4		55	1260400	Guarnizione	Gasket	1	
	1323100	Albero eccentrico	Crankshaft	1	○	56	1261560	Vite autof. 3,9x16	Screw	4	
	1323110	Albero eccentrico	Crankshaft	1	●	57	1271950	Fermacavo	Cable retainer	1	
	1260200	Albero eccentrico	Crankshaft	1	■▲	58	1269090	Fermacavo	Cable retainer	1	
	1260180	Albero eccentrico	Crankshaft	1	□	61	1263520	Condensatore 40µF	Capacitor 40µF	1	
	1320260	Albero eccentrico	Crankshaft	1	▼	62	1269100	Morsetto di terra	Earh terminal	1	
8	180400	Cuscinetto	Bearing	1		63	1261710	Scatola morsettiera	Terminal box	1	
9	1260770	Anello seeger	Circlip	1		64	3223	Manometro	Pressure gauge	1	
10	1260790	Anello seeger Øi 52	Circlip	1		73	1262180	Interr. luminoso 12 A	Luminous switch 12 A	1	
11	1260750	Anello tenuta	Seal	1		74	1265080	Guarnizione interr.	Gasket	1	
12	1260950	Cuscinetto	Bearing	1		81	1260810	Vite TCTC M 4x10	Screw	1	
13	1260960	Scudo motore	Motor shield	1		82	1340280	Fascetta	Clamp	1	
14	1260360	Colonna	Stud bold	4		86	1260050	Boccola	Bushing	1	○●■□
15	1260970	Anello tenuta v.ring	V-ring seal	1		1320330	Boccola	Bushing	1	▲▼	
16	1260300	Ventola	Fan	1		1260010	Corpo pompa	Pump housing	1	○●■□	
21	740290	OR Ø 14x1,78	O-Ring	2		1271220	Corpo pompa	Pump housing	1	▲▼	
22	1980740	Tappo 3/8" G	Plug	3	Ottone/Brass	1269317	Prem. testa pompa	Pump head pre-ass.	1	○●■□	
23	1260460	Anello tenuta	Seal	3		1269320	Prem. testa pompa	Pump head pre-ass.	1	▲▼	
24	1260420	OR Ø 26,70x1,78	O-Ring	3		92	44060	Mot. elettrico	Electric motor	1	
25	1260440	Guarnizione	Gasket	3		93	1381550	Rondella	Washer	6	
26	1260151	Guida pistone	Piston guide	3		94	20821	Valvola Minimatic 4/B	Minimatic 4/B valve	1	
27	1271650	Guarnizione	Gasket	3		95	1981780	Manopola	Knob	1	
28	1520120	Anello appoggio	Support ring	3		96	1980470	Grano M 6x20	Grub screw	1	
	1260120	Pistone	Piston	3	○●■□	97	1980300	Dado M 6	Nut	1	
	1260210	Pistone	Piston	3	▲▼	98	1980390	Inserto manopola	Knob insert	1	
30	1260830	Piede	Base	2		99	1980220	Piattello molla	Spring plate	2	
31	820361	Tappo 1/2" G	Plug	1		100	1271070	Molla	Spring	1	
32	180101	OR Ø 17,5x2	O-Ring	1		101	1080041	Pistone superiore	Upper piston	1	
33	1320022	Testa pompa	Pump head	1		102	1080070	Spina	Pin	2	
34	1261760	Copriventola	Fan housing	1		103	1080401	Anello antiestrusione	Back-up ring	1	
35	880830	OR Ø 15,54x2,62	O-Ring	6		104	1080250	OR Ø 7,66x1,78	O-Ring	1	
36	1269050	Valvola completa	Complete valve	6		105	1981770	Tappo manopola	Knob plug	1	
41	960160	OR Ø 17,86x2,62	O-Ring	6		106	1980210	Guida pistone	Piston guide	1	
42	1260162	Tappo	Plug	6	C=34 Nm	107	740290	OR Ø 14x1,78	O-Ring	1	
43	680570	Vite TCEI M 6x60	Screw	6	C=10 Nm	108	800560	OR Ø 8,73x1,78	O-Ring	1	
44	1380520	Linguetta	Key	1		109	880830	OR Ø 15,54x2,62	O-Ring	1	
45	1260060	Biellea Alluminio	Aluminium Con rod	3		110	1271170	Anello antiestrusione	Back-up ring	1	
46	1260080	Spinotto	Piston pin	3		111	1080190	OR Ø 2,90x1,78	O-Ring	2	
47	1260070	Pistone di guida	Piston rod	3		112	1271160	Pistone inferiore	Lower piston	1	
48	1260091	Disco separatore	Spacer	3		113	1980200	Sede valvola	Valve seat	1	
49	480480	OR Ø 4,48x1,78	O-Ring	3		114	1470210	OR Ø 9x1	O-Ring	1	
50	1260100	Rondella	Washer	3		115	1540272	Vite 3/8" G	Screw	1	Ottone/Brass
						116	390080	OR Ø 11,91x2,62	O-Ring	2	
						117	1540510	Corpo valvola	Valve housing	1	
						118	1140450	OR Ø 20,24x2,62	O-Ring	1	
						119	1460430	OR Ø 4x2,5	O-Ring	1	
						120	1540170	Otturatore	Jet	1	
						121	1080091	Molla sfera	Ball spring	1	
						122	394280	OR Ø 12,42x1,78	O-Ring	1	
						123	1540280	Corpo by-pass 1/2" G	By-pass housing	1	
						124	1540630	OR Ø 23,47x2,62	O-Ring	1	
						125	880270	OR Ø 17,17x1,78	O-Ring	1	
						126	2260420	Vite 1/2" G	Screw	1	
						127	1540180	Raccordo	Fitting	1	

KIT RICAMBI - PART KITS

A=KIT 1880 valvole valves		B=KIT 2623 pistoni pistons		C=KIT 1876 tenute olio oil seals		D=KIT 2624 tenute acqua water seals	
Pos.	Q.ty	Pos.	Q.ty	Pos.	Q.ty	Pos.	Q.ty
35	6	29	3	3	1	24	3
36	6	48	3	11	1	25	3
		49	3	23	3	27	3
		50	3			28	3
		51	3				

E=KIT 2767 OR O-rings		E=KIT 2812 OR O-rings					
Pos.	Q.ty	Pos.	Q.ty	Pos.	Q.ty	Pos.	Q.ty
21	2	103	1	111	2	124	1
24	3	104	1	114	1	125	1
32	1	107	1	116	2		
35	1	108	1	118	1		
41	1	109	1	119	1		
49	1	110	1	122	1		

SIMBOLOGIA - SYMBOLS

○ Per / For HPE-M 02.08	□ Per / For HPE-M 06.08	▲ Per / For HPE-M 11.07
● Per / For HPE-M 04.08	■ Per / For HPE-M 08.08	▼ Per / For HPE-M 13.06

C = Coppia serraggio (Tolleranza +0 / -10% Nm)
C = Torque wrench (Allowance +0 / -10% Nm)

GB TORQUE WRENCH SETTINGS

For the torque wrench see spare parts page list.

LUBRICATION

Before starting the pump, check the oil level in the pump. 0,38 kg of "SAE 30W" is to be used. Change the oil after the first 50 working hours and then after every 500 working hours.

F COUPLES DE SERRAGE

Pour les couples de serrage voir liste page rechanges.

LUBRIFICATION

Avant la mise en service de la pompe s'assurer que l'huile dans le carter soit à son juste niveau. L'huile à utiliser est "SAE 30W" 0,38 kg. Changer l'huile après les premières 50 heures de fonctionnement et successivement toutes les 500 heures de travail.

D ANZUGSMOMENTE

Für Anzugsmomente siehe Ersatzteilseiteliste.

SCHMIERUNG

Vor der Inbetriebnahme der Pumpe Ölstand im Kurbelgehäuse überprüfen. Zur Ölfüllung 0,38 kg "SAE 30W" verwenden. Ölwechsel nach den ersten 50 Betriebsstunden und dann alle 500 Betriebsstunden vornehmen.

E PARES DE TORSION

Para los pares de torsión ver la lista pagina repuestos.

LUBRICACION

Antes de poner en funcionamiento la bomba asegurarse que el nivel de aceite en el carter sea justo. El aceite que debe utilizarse es "SAE 30W" en la cantidad de 0,38 kg. Cambiar el aceite después de las primeras 50 horas de funcionamiento y sucesivamente cada 500 horas de trabajo.

I COPPIE DI SERRAGGIO

Per le coppie di serraggio vedere distinta pagina ricambi.

LUBRIFICAZIONE

Prima dell'avviamento della pompa assicurarsi che l'olio nel carter sia al giusto livello. L'olio da usare è "SAE 30W" nella quantità di 0,38 kg. Sostituire l'olio dopo le prime 50 ore di funzionamento e successivamente ogni 500 ore di lavoro.

DIMENSIONS / DIMENSIONES / ABMESSUNGEN / DIMENSIONES / DIMENSIONI

